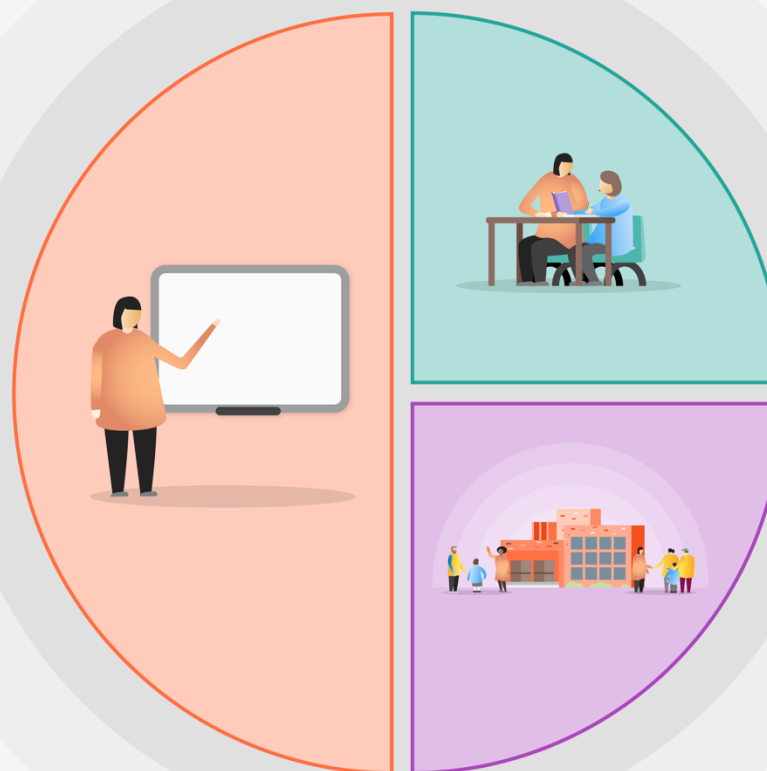


1 Teaching

- RWI programme for all children up to year 2.
- RWI get spelling programme for Y2- Y6
- Whole School pleasure for reading approach
- Talk for writing approach used across the whole school
- White rose approach for whole school
- Maths leads working with maths hub
- Whole school subscription to spelling shed
- Numbots to be purchased to help with fluency
- Booster session for KS1 and KS2 SATS
- Whole school reading spine has been developed



2 Targeted academic support

- Teacher led intervention days
- Pupil conferencing
- Same day intervention
- Teaching assistant led interventions
- TIS practitioner in school
- Autism and Dyslexia champions

3 Wider strategies

- Early morning work
- Speech and language therapist
- Dreadnought counselling service
- Visual support team
- Social stories
- Trauma informed school
- Teacher enrichment clubs
- Nurture provision
- Enhanced trips and visits provision
- Uniform voucher
- Social/ communication groups